



# PANEL INFOGRAPHICS



**XR550**  
**506**  
OUTPUTS

**WI-FI**  
**10 | 100**  
**NETWORK**

**XR550**  
**16**  
KEYPADS  
**XR150**  
**8**  
KEYPADS

**XR150**  
**106**  
OUTPUTS

**CELLULAR**  
**LTE**  
TECHNOLOGY

**COMMERCIAL**  
**FIRE**

**COMMERCIAL**  
**BURG**

**45**  
WIRELESS  
OUTPUTS

**AREAS**  
**32**  
XR550  
**8**  
XR150

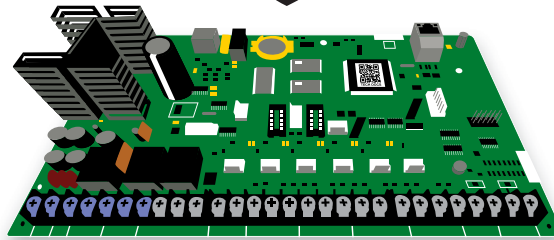
**MULTI CARD**  
**FORMAT**  
**8**  
CARD  
FORMATS

**DOORS**  
**OF ACCESS**  
XR550: **96**  
XR150: **8**

**MULTI**  
**LINGUAL**  
SPANISH  
FRENCH  
ENGLISH

XR550DN AND XR550DE  
**BANK**  
SAFE & VAULT  
PANIC TISS, DUAL AUTHORITY & PRIORITY AREA

**XR550E**  
AES 128 OR 256 BIT  
**ENCRYPTION**



DESIGNED, ENGINEERED, AND MANUFACTURED BY **DMP**

**7** WIRELESS  
KEYPADS

**CARD**  
PLUS PIN  
PER PROFILE  
MEETS ICPG 705

**XR550**  
**574**  
ZONES

**32**  
CHARACTER  
NAMES  
FOR USER, ZONE, AREA, PROFILES,  
SCHEDULES, AND GROUP NAMES

**CUSTOM**  
**ACTIONS**  
**20**

**10,000**  
USER CODES

**XR150**  
**142**  
ZONES

**Virtual Keypad**  
FOR PS AND ANDROID

**Virtual Keypad**  
ACCESS

**8** COMMUNICATION  
PATHS

**12,000**  
EVENT BUFFER

**XR550**  
**500**  
WIRELESS  
ZONES

**COMPLIANCE**  
FCC, UL, NEST

**DMP 2-WAY**  
**WIRELESS**  
COMPATIBILITY

**99**  
SCHEDULES

**SYSTEM TYPE**  
HOME SLEEP  
AWAY AREAS  
ALL PERIMETER

**8** SCHEDULES  
PER PROFILE (OUTPUT FAVORITE) AREA

**16** SCHEDULES  
PER DOOR

**4** PROFILES  
PER USER

**XR150**  
**100**  
WIRELESS  
ZONES

**TYPE OF POWER**  
1.5 AMPS BELL | 1.5 AMPS AUX

**99** USER  
PROFILES

**32 BIT PROCESSOR RUNNING**  
**20X** FASTER  
THAN XR500

**ENHANCED**  
**LOCKDOWN**

**OPTIONAL**  
**DIALER**

**DUAL**  
AUTHORITY

**Tech APP**  
AUTOMATIC PANEL PROGRAMMING

**40** HOLIDAY  
DATES

**0-425 DAY**  
USER CODE AUDIT

**140** Z-WAVE  
DEVICES SUPPORTED

**25** Z-WAVE  
DEVICES  
PER FAVORITE

**20** Z-WAVE  
FAVORITES  
PER SYSTEM



**4**  
OUTPUTS

**8**  
KEYPADS

**4**  
WIRELESS  
KEYPADS

**6**  
AREAS

**8**  
WIRELESS  
OUTPUTS  
REMOTES OR  
SIRENS

**COMMERCIAL  
BURGLARY**

**WI-FI**


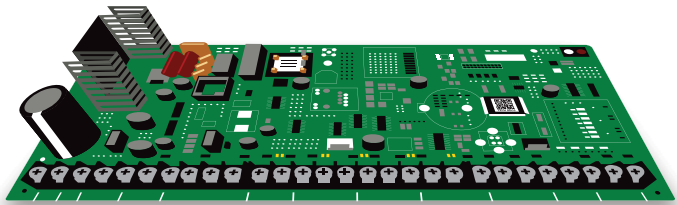
**10 | 100**  
NETWORK

**20**  
CUSTOM  
ACTIONS

**CELLULAR  
LTE  
TECHNOLOGY**

**Tech APP™**  
AUTOMATIC PANEL PROGRAMMING

**OPTIONAL  
DIALER**

DESIGNED, ENGINEERED, AND MANUFACTURED BY **DMP**

**EVENT MEMORY**

**100**  
XT30  
**200**  
XT50

**30** XT30  
**99** XT50  
\*\*\*\*  
**USER  
CODES**

**SYSTEM TYPE**

HOME SLEEP AWAY  
AREAS ALL PERIMETER

**140**  
**Z-WAVE**  
DEVICES SUPPORTED

**20**  
**Z-WAVE  
FAVORITES  
PER SYSTEM**

**16**  
CHARACTER  
NAMES

**XT30**  
OPENING AND CLOSING  
SCHEDULES

**XT50**  
20 FAVORITE  
AND OUTPUT  
SCHEDULES

**TYPE OF  
POWER**

500MA AUX  
**1.5 AMPS  
ON BELL**

**25**  
**Z-WAVE DEVICES  
PER FAVORITE**

**16** CHARACTER NAMES FOR USER, ZONE, AREA, PROFILES, SCHEDULES, AND GROUP NAMES

**Virtual Keypad™** FOR PDS AND AHROD

**VirtualKeypad.com™**

**COMPLIANCE** ULL, CSFH

**FAST PROGRAMMING**

**DMP 2-WAY WIRELESS COMPATIBILITY**



**WI-FI**

CUSTOM ACTIONS

**20**



**7 WIRELESS KEYPADS**



**8**

**WIRELESS OUTPUTS REMOTES OR SIRENS**

CELLULAR  
**LTE**  
TECHNOLOGY

**6 AREAS**

**COMMERCIAL BURGLARY**



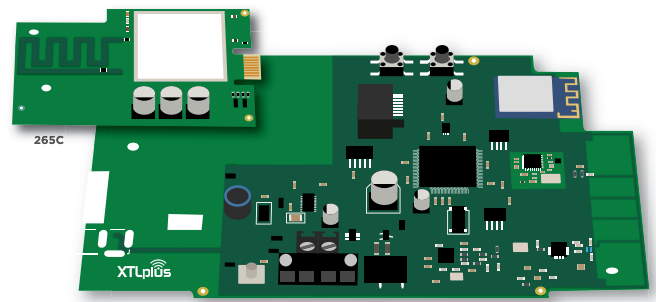
**99 WIRELESS ZONES**

**Tech APP™**  
AUTOMATIC PANEL PROGRAMMING

**BUILT-IN Z-WAVE**

**DMP 2-WAY WIRELESS COMPATIBILITY**

**XTLplus**



DESIGNED, ENGINEERED, AND MANUFACTURED BY **DMP**



**EVENT 200 MEMORY**



**99 USER CODES**

**SYSTEM TYPE**



HOME



SLEEP



AWAY



AREAS



ALL



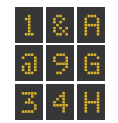
PERIMETER

**140 Z-WAVE DEVICES SUPPORTED**



**Z-WAVE FAVORITES PER SYSTEM 20**

**16 CHARACTER NAMES**



FOR USER, ZONE, AREA, PROFILES, SCHEDULES, AND GROUP NAMES

**Virtual Keypad™**  
FOR IOS AND ANDROID

**VirtualKeypad.com™**

**COMPLIANCE** ETL, CSFM

**FAST PROGRAMMING**

**25 Z-WAVE DEVICES PER FAVORITE**





**WI-FI**

WPS COMPATIBLE



**7 WIRELESS KEYPADS**



**8 WIRELESS OUTPUTS REMOTES OR SIRENS**



**MULTIPLE CHIMES**

**2 INSTALLATION OPTIONS**  
TABLE-TOP | WALL-MOUNT



**6 AREAS**

**COMMERCIAL BURGLARY** 

**RESIDENTIAL FIRE** 

# XTLtouch™

Your Enhanced All-In-One Solution



DESIGNED, ENGINEERED, AND MANUFACTURED BY 

**99 WIRELESS ZONES**

**BUILT-IN Z-WAVE PLUS**



**DMP 2-WAY WIRELESS BUILT-IN**

**200 EVENT MEMORY**

**99 USER CODES**

**SYSTEM TYPE**



**140 Z-WAVE PLUS DEVICES SUPPORTED**

**20 CUSTOM ACTIONS**

**16 CHARACTER NAMES**



**Virtual Keypad™**  
FOR IOS AND ANDROID

**VirtualKeypad.com™**

**COMPLIANCE** ETL, CSFM 

**FAST PROGRAMMING**

**50 SENSOR ACTIVITY ZONES**

**20 Z-WAVE FAVORITES PER SYSTEM**